

Organization Configuration

The ElectronRT App allows for users with certain permissions to view and edit organization level configuration settings. The Organization Configuration block is located in the main page of the app and is only visible to users with Admin or Physics level permissions.

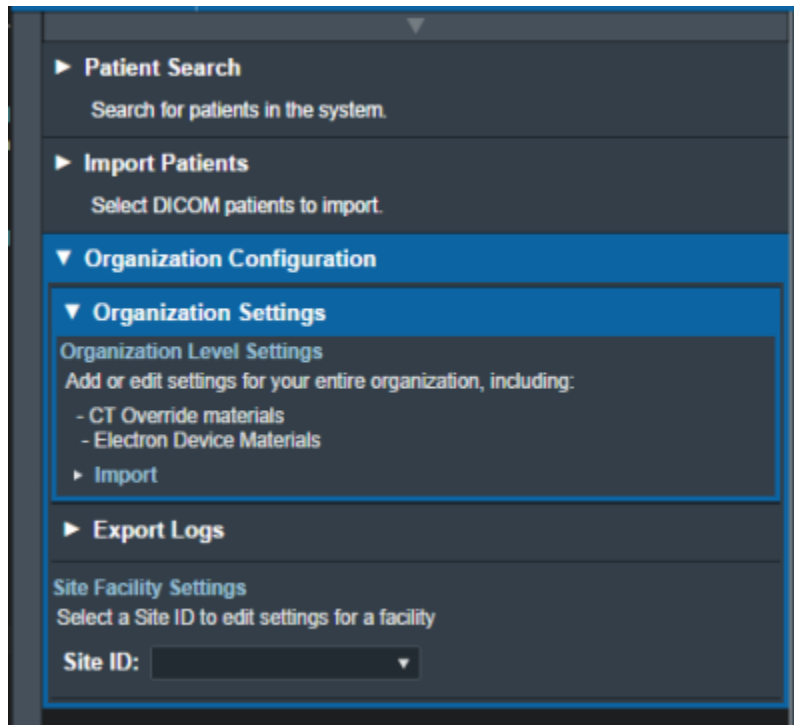


Fig. 1: Organization Configuration UI

Users with Admin permissions are able to import organization settings from a data file. Clicking the “Import” link will show the “Import Organization” button that allows the user to select a local .dvh file with organization data for import.



Fig. ##: Importing Organization

Organization Settings

The Organization Settings block allows the user to view and edit settings that affect the entire organization. These settings include organization name, PDF report logo, CT override materials, and electron device materials.

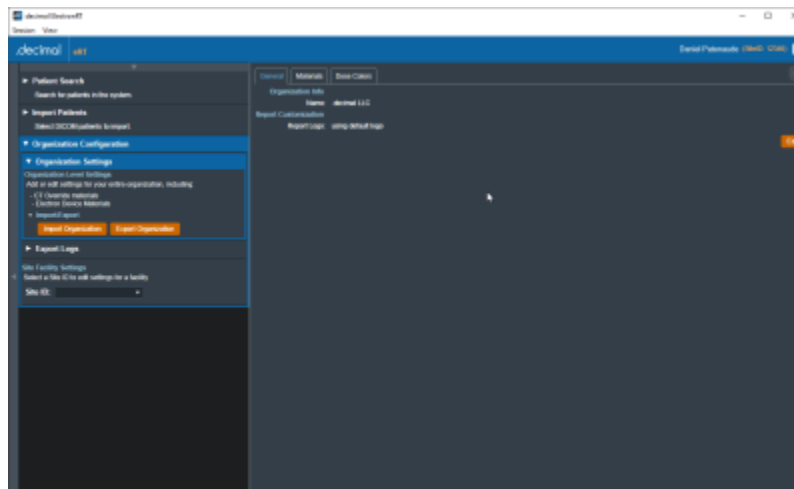


Fig. 2: Organization Settings

While editing the settings in the Organization Configuration block, the UI is changed such that the user cannot click on other sections of the UI until confirming edits with “Done” or canceling edits with “Cancel”. Some settings are grouped into tabs, such as the “General” and “Materials” tabs in the Organization Settings.

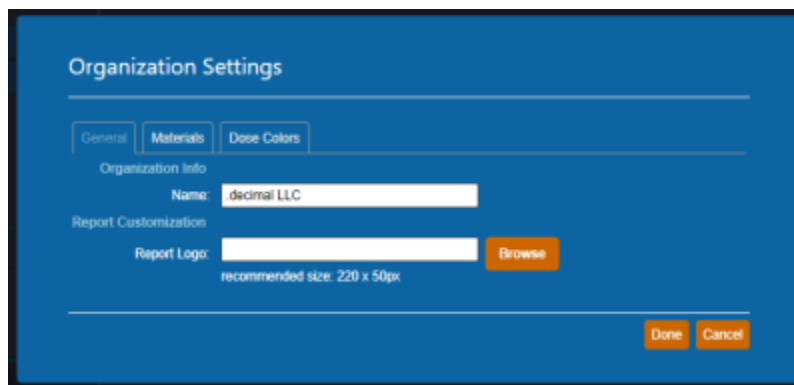


Fig. 3: Organization Edit UI

Export Logs

The Export Logs block allows the user to export a file containing logs of user activity within the app. This .csv file contains data exported from the app database that keeps track of user activity such plan approvals, report exports, hardware ordering, etc.

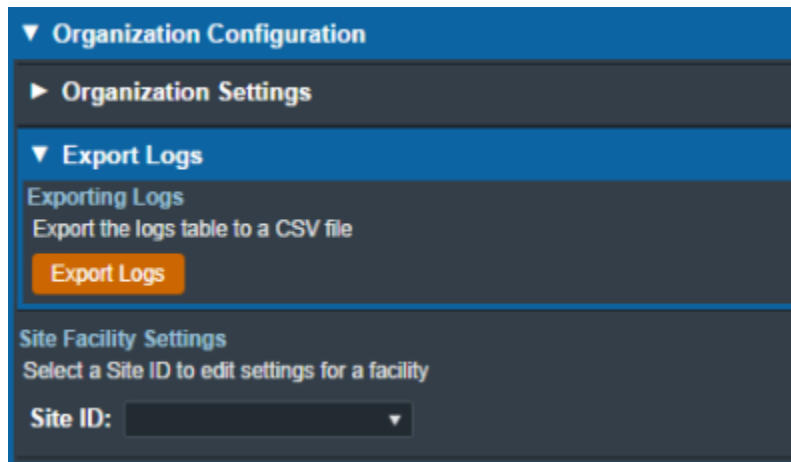


Fig. 6: Export Logs UI

Site Facility Settings

The Site Facility Settings section of the Organization Configuration allows users to view and edit settings for each site in the organization. After selecting a Site ID, the site level settings are divided into five categories: Site Settings, DICOM Settings, CT Curves, QA Options, and Machine Settings.

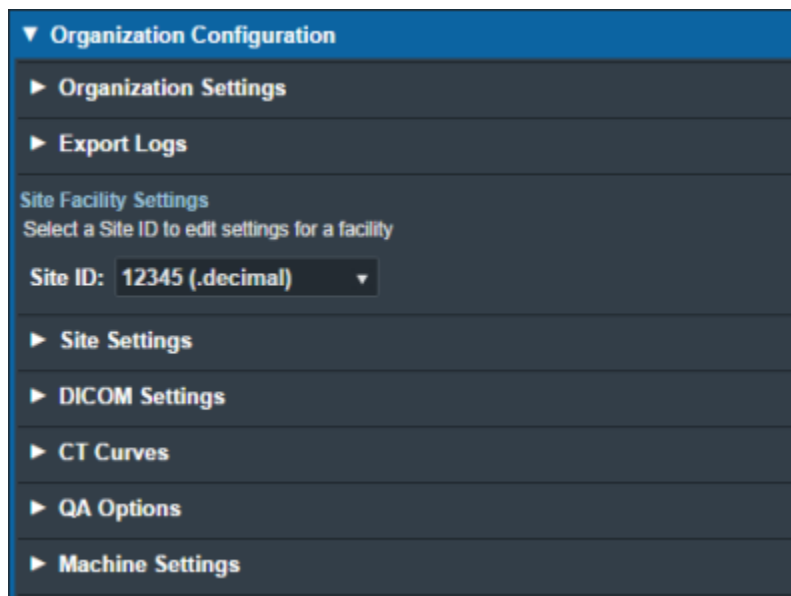


Fig. 7: Site Facility Settings

Site Settings

The Site Settings block allows for the viewing and editing of miscellaneous site level settings including the site address, physicians, and treatment sites. In order to edit physicians, the user must first click on the physician name on the list of physicians on left side UI and then click on "Edit Physician" on the right side UI (this is also the case with treatment sites). Users can add or remove physicians and treatment sites using the left side UI.

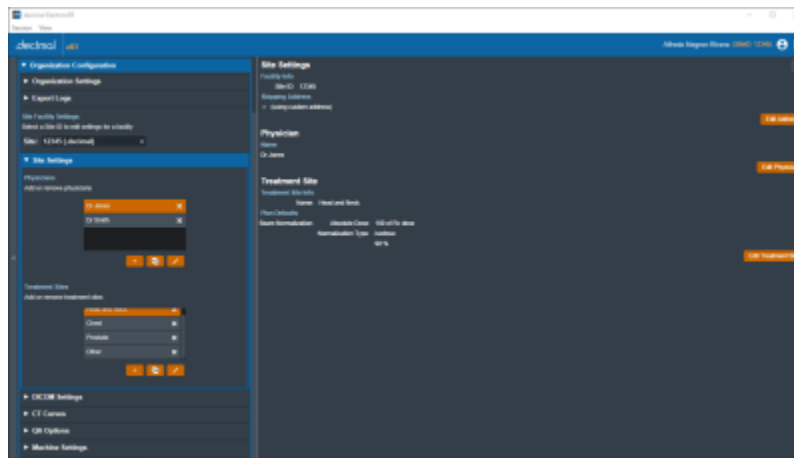


Fig. 8: Site Settings UI

DICOM Settings

The DICOM Settings block allows the user to view and edit settings related to the export of DICOM files. These settings include the default DICOM export directory and a list of DICOM server AE titles.

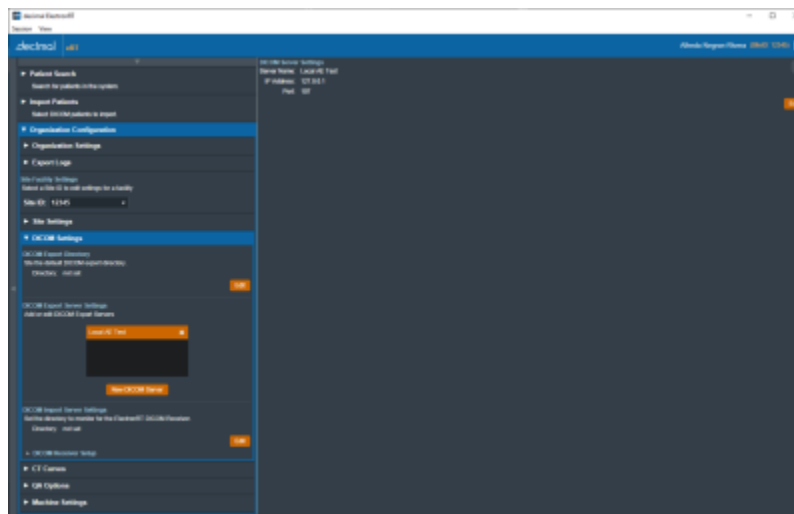


Fig. 10: DICOM Settings UI

CT Curves

The CT Curves block allows for the viewing and editing of CT conversion curves. These curves must contain samples for both stopping and scattering power. The stopping power data for the selected curve is displayed on a graph on the right side UI.

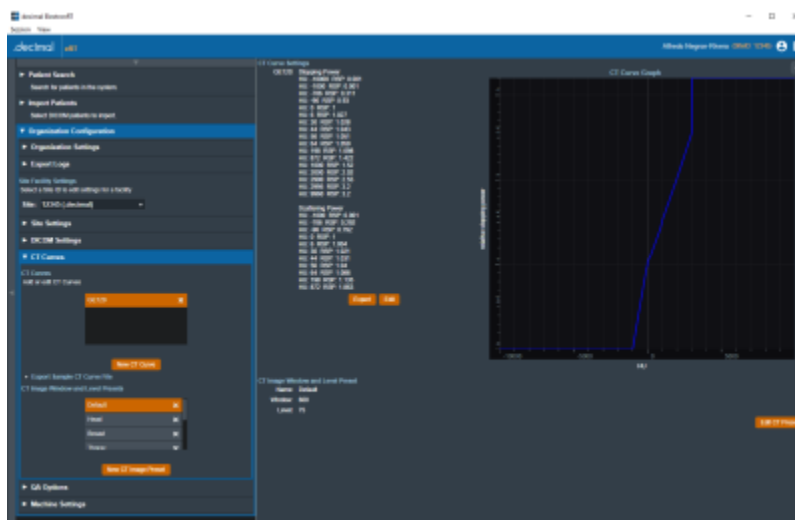


Fig. 11: CT Curves UI

QA Options

The QA Options block allows the user to view and edit settings related to Dose QA. These settings include the dimensions of the water phantom, dose grid spacing, and the default measurement plane depth.

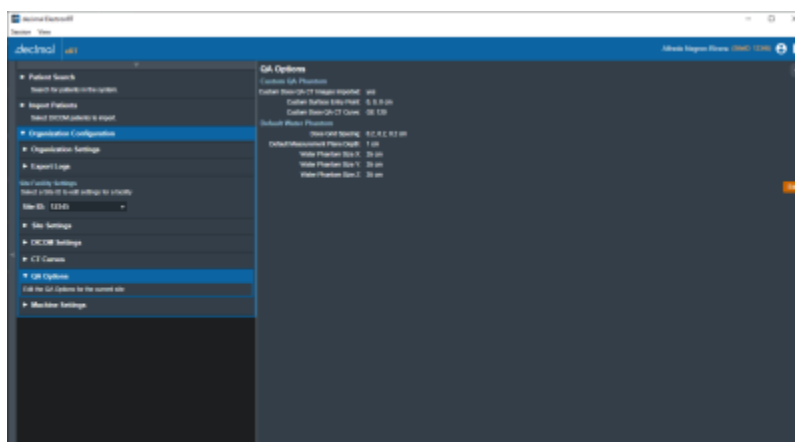


Fig. 13: QA Options UI

Machine Settings

The Machine Settings block allows the user to view and edit machines for the selected site. The machine settings are divided into five tabs: General, Geometry, Applicators, Commissioning, and Advanced.

General Machine Settings

The General tab of the Machine Settings block allows for the viewing and/or editing of general machine information such as the machine name, description, serial, type, and physical SAD.

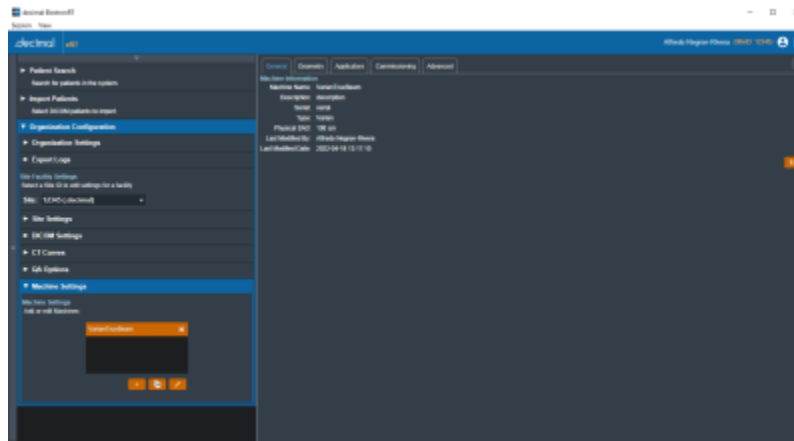


Fig. 14: General Machine Settings UI

Machine Geometry Settings

The Geometry tab of the Machine Settings block allows the user to view and edit IEC coordinate system settings. These settings include the reference gantry angle, reference couch angle, reference collimator angle, and the rotation direction of each axis.

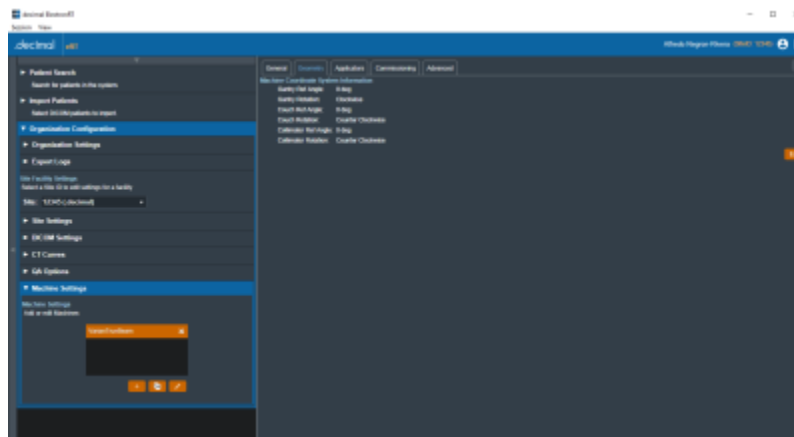


Fig. 15: Machine Geometry Settings UI

Applicator Settings

The Applicators tab of the Machine Settings blocks allows for the viewing and/or editing of applicator and beamline device settings. Information regarding blocks, intensity modulators, and applicators of varying sizes are displayed and the user can choose which applicators are available when creating a treatment plan using the current machine. The available applicators are dependent on type of machine (Siemens, Varian, or Elekta) chosen during the creation of a new machine.

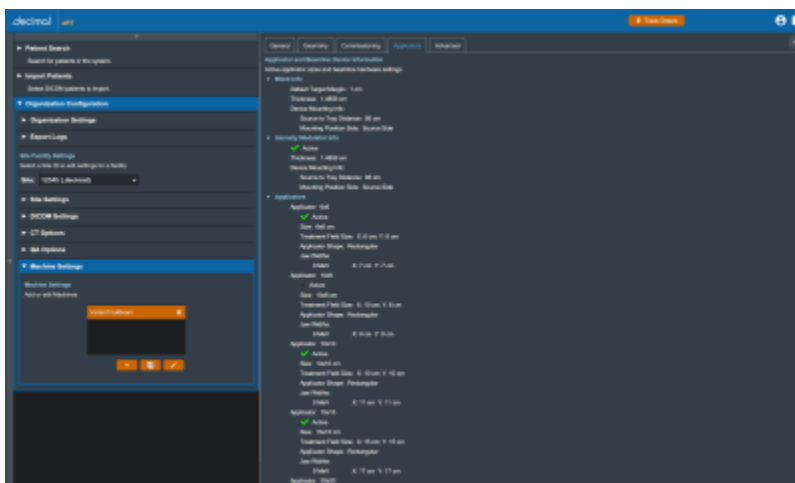


Fig. 16: Applicator Settings UI

Commissioning Data Settings

The Commissioning tab of the Machine Settings block allows the user to view and edit commissioning energy data. The user can view the nominal energy and R90 values of the current commission data or import new commissioning data from a local file. The ElectronRT App currently only has support for commissioning data from the Pinnacle treatment planning system.

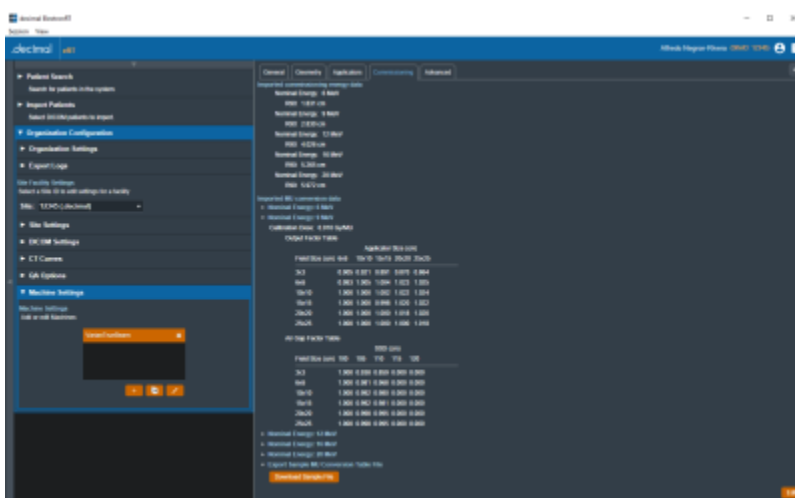


Fig. 17: Commissioning Data Settings UI

Advanced Settings

The Advanced tab of the Machine Settings block allows for the view and editing of advanced machine configuration parameters. These settings include tolerance tables, wedge tray information, blocking tray information, and room imaging parameters.

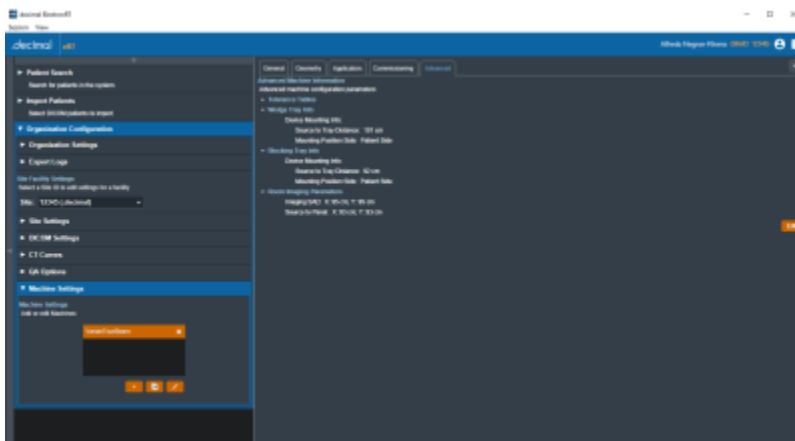


Fig. 18: Advanced Machine Settings UI

From:
<http://apps.dotdecimal.com/> - **decimal App Documentation**

Permanent link:
http://apps.dotdecimal.com/doku.php?id=electronrt:userguide:tutorials:organization_configuration&rev=1599068711

Last update: **2021/07/29 18:24**

