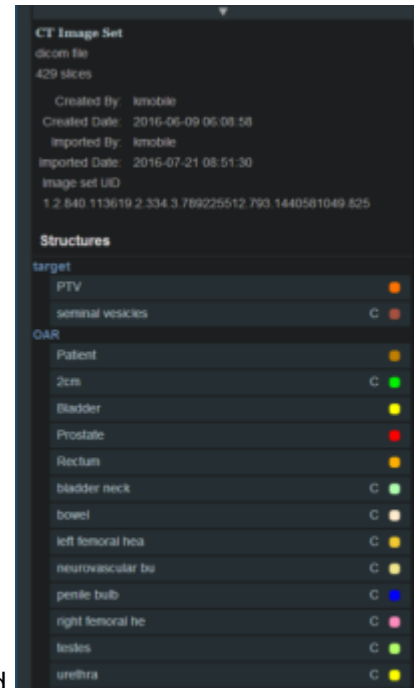


FIX ME below this point

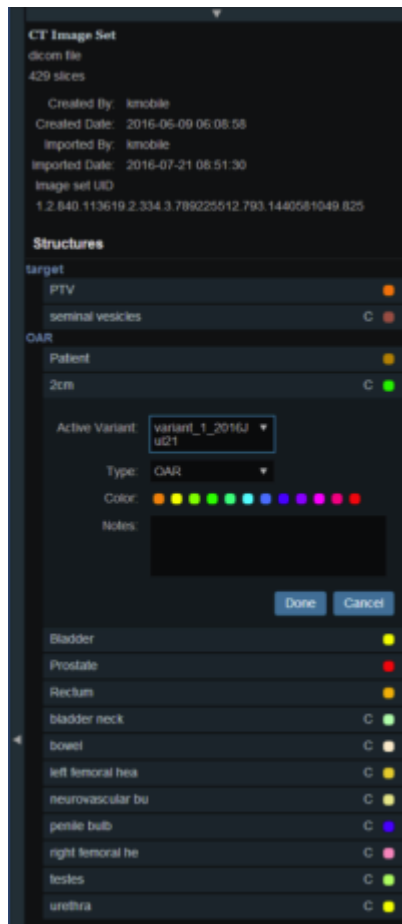
# Creating Structures

Once the Directive has been completed the next block will be Snapshot. The Snapshot contains a single CT image set and all contour variants (targets and organs at risk) associated with these images.

1. Snapshot contains data relating to the image set such as the number of slices, who imported the image set, the import date and the UID



2. Snapshot also contains a list of the structures that were imported
3. Any structure with a "c" beside it has the ability to be edited in a limited capacity



4. The planner may choose to change the structure variant (see Instructions for Use> Snapshot> Variant for description of Variant) ,color and type. The planner may also choose to enter any notes that may be helpful at this point.

From:  
<https://apps.dotdecimal.com/> - **decimal App Documentation**

Permanent link:  
[https://apps.dotdecimal.com/doku.php?id=planning:userguide:walkthroughs:creating\\_structures&rev=1469108132](https://apps.dotdecimal.com/doku.php?id=planning:userguide:walkthroughs:creating_structures&rev=1469108132)

Last update: **2021/07/29 18:25**